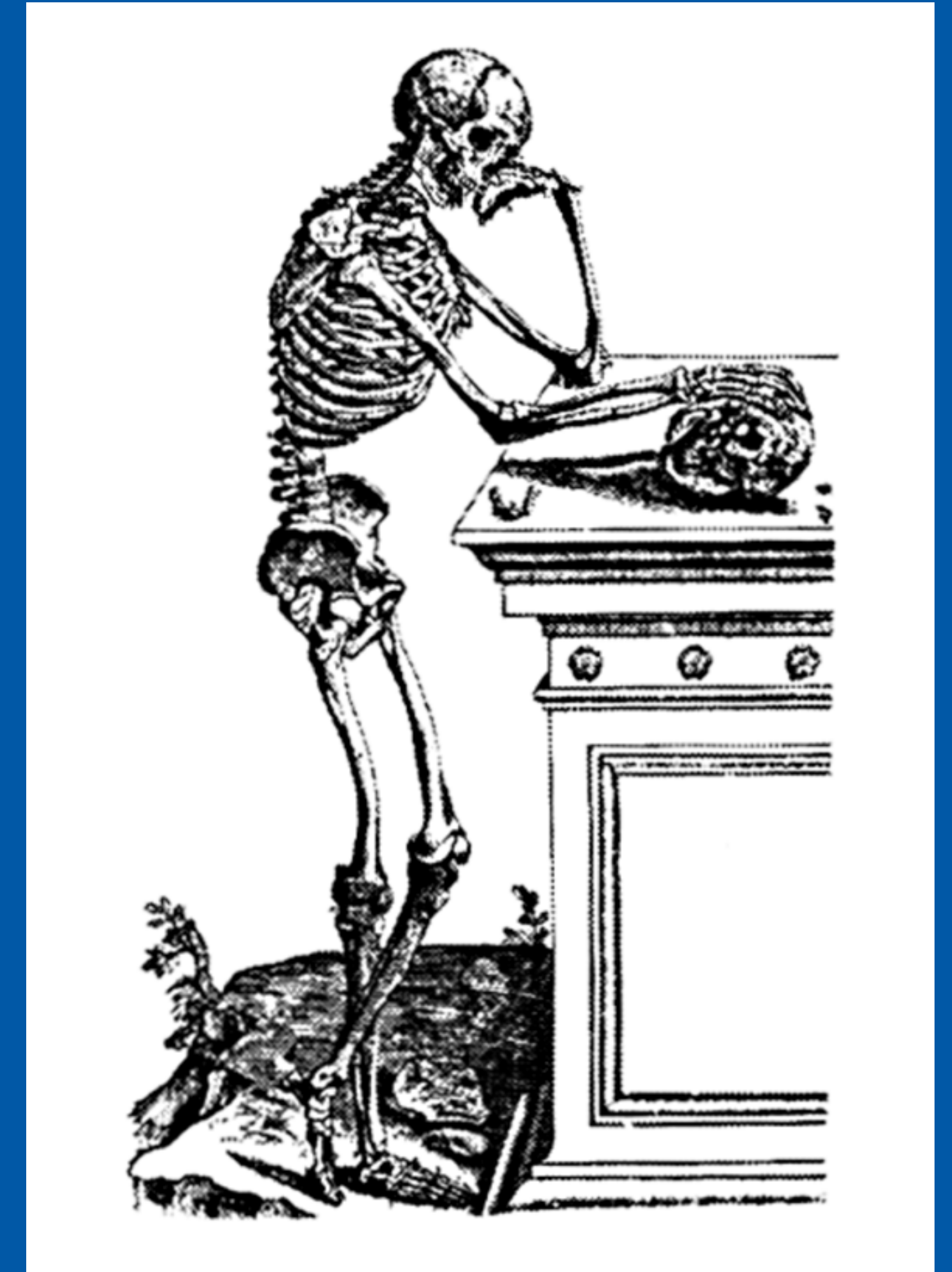


42nd Annual Meeting, Scottsdale, Arizona  
Society of Skeletal Radiology  
March 10-13, 2019



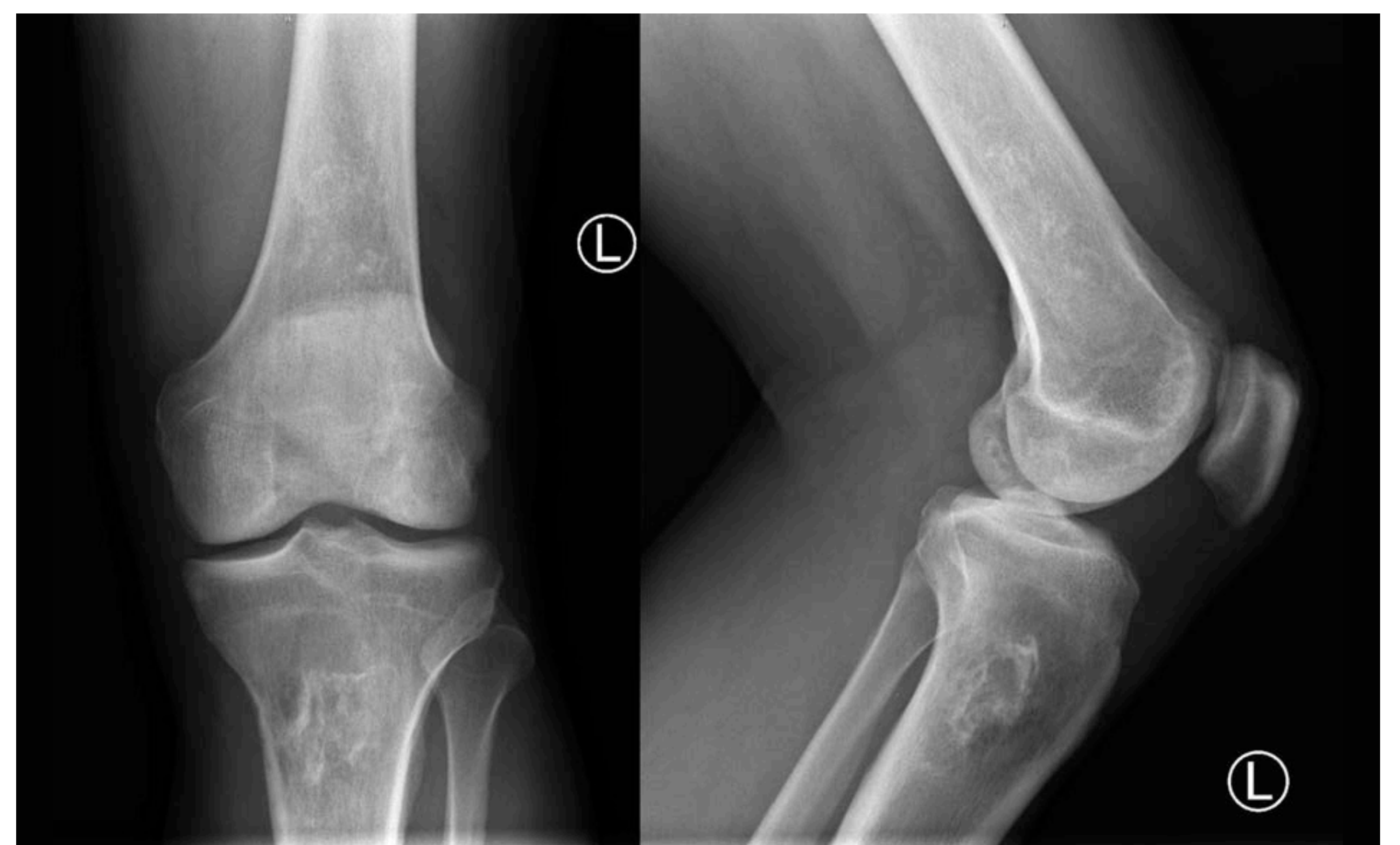
# CASE OF THE DAY: TUESDAY

 #SSRBONE19COD6

Rupert Stanborough, MD; Travis J Hillen, MD  
Mallinckrodt Institute of Radiology, Saint Louis, MO

## HISTORY

- 58-year-old man with left knee pain
- Remote history of aplastic anemia managed by bone marrow transplant



## DIAGNOSIS

Infarct-associated osteosarcoma  
of the left tibia

- Rare sarcoma associated with bone infarction
- Most common reported infarct-associated sarcoma histologies are MFH/UPS and osteosarcoma
- 93% reported in the lower extremities
- Typically poor prognosis
- Imaging features described in the literature
  - Radiographs: Lytic lesion (sometimes subtle) adjacent to and surrounding a bone infarct
  - CT: Aggressive appearing lytic lesion adjacent to and surrounding a bone infarct
  - MRI: Enhancing intramedullary mass involving the bone infarct extending to involve cortex with or without soft tissue mass

